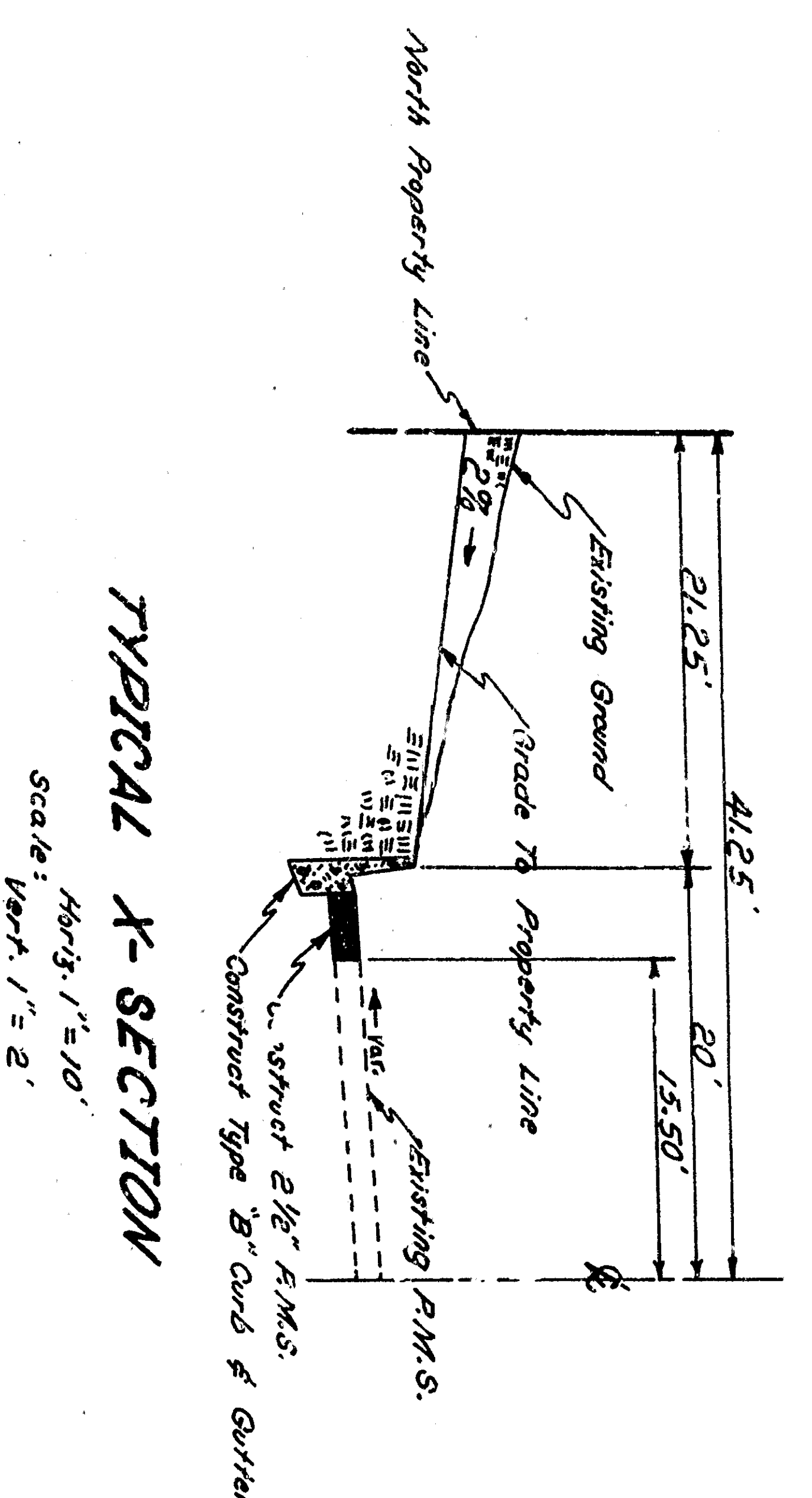
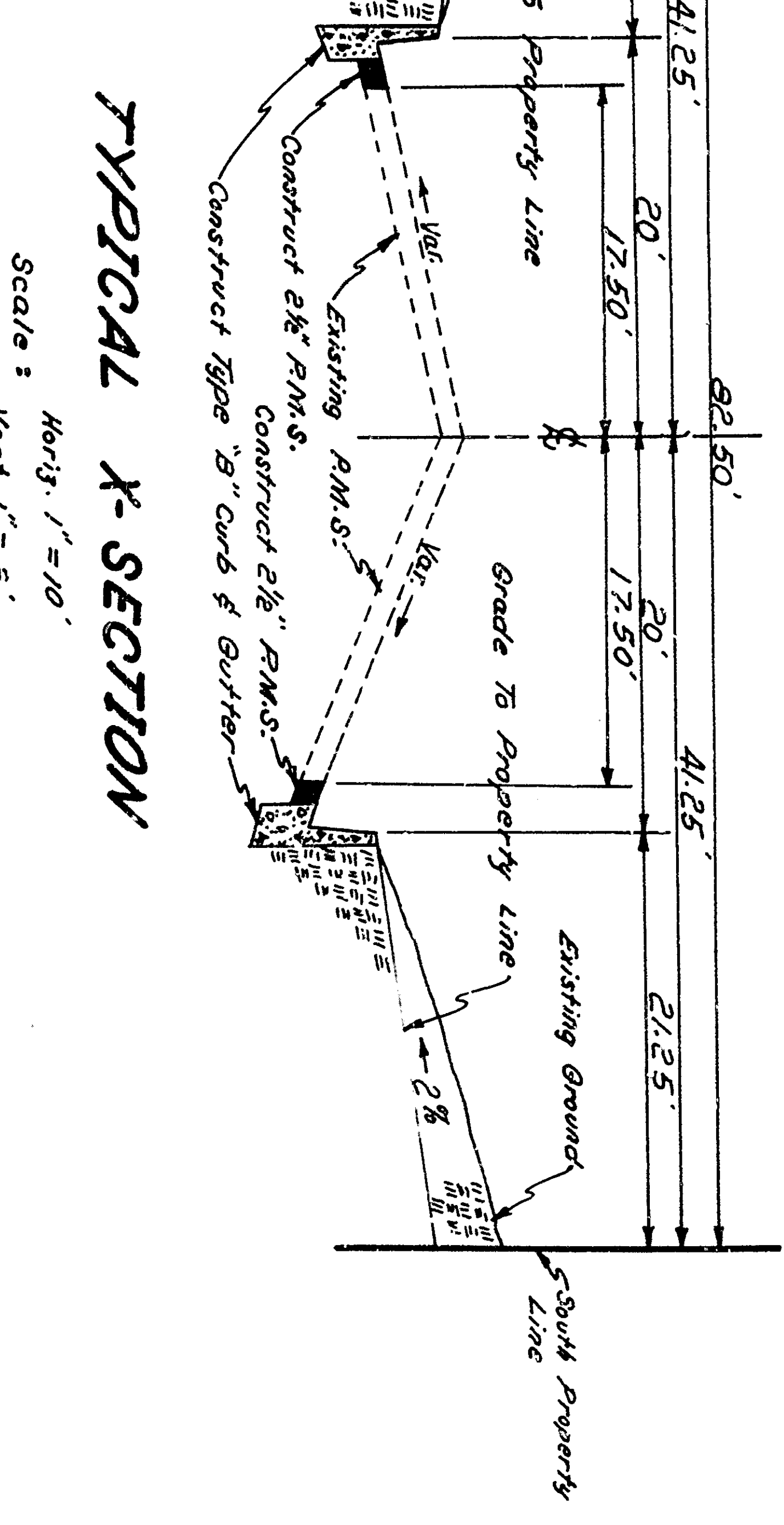
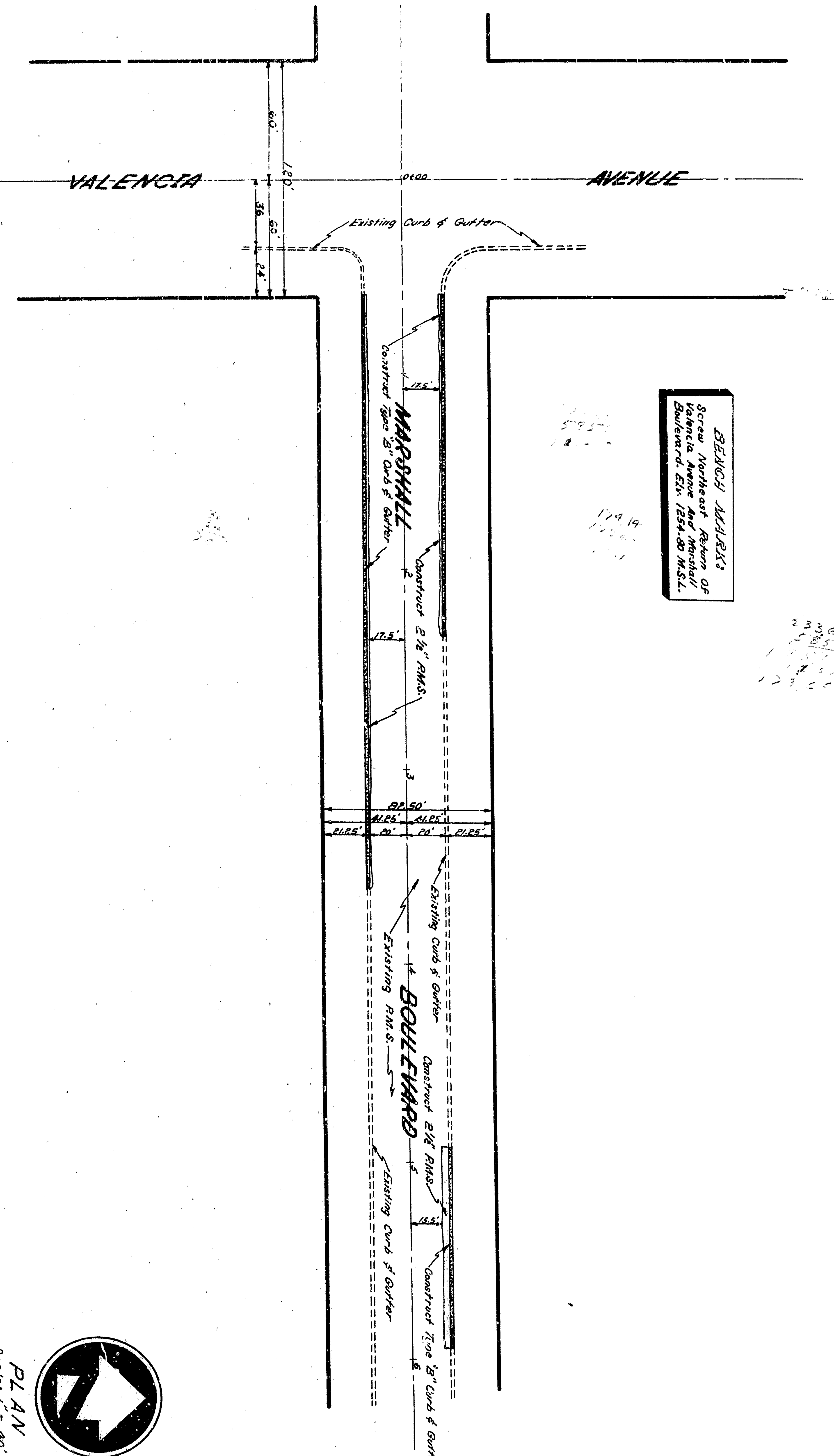
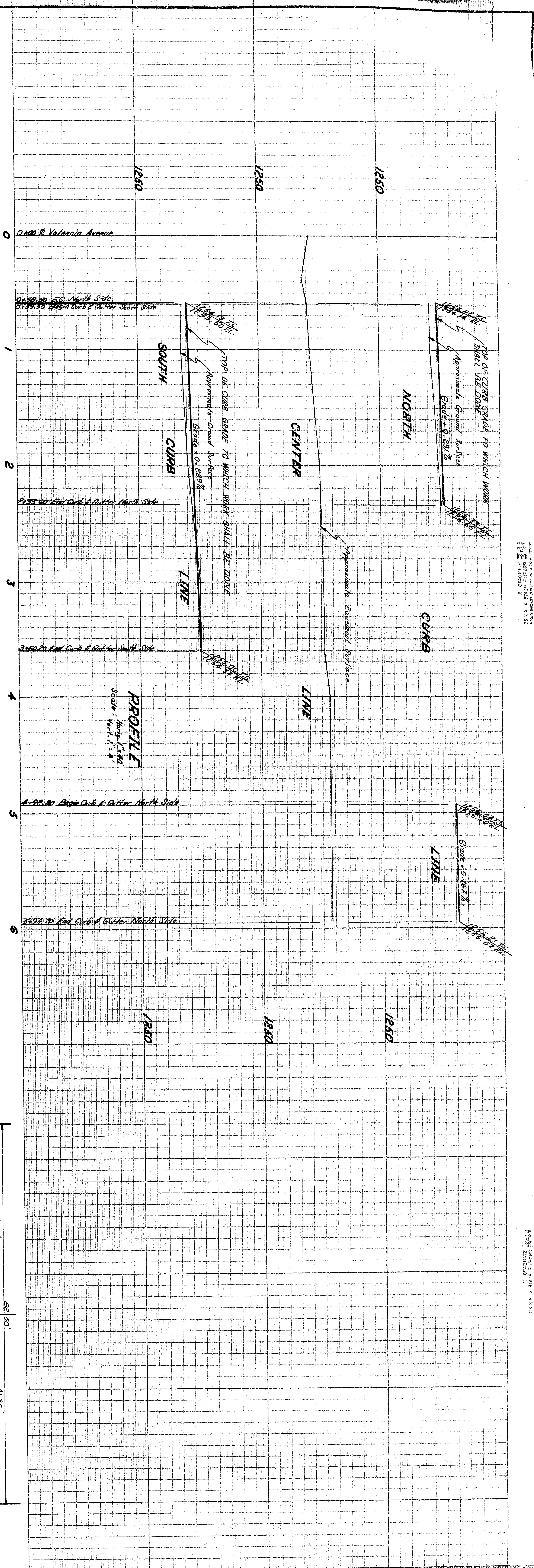


BEING: ALVARO
 Scribe Northeast Return of
 Valencia Avenue and Marshall
 Boulevard, EIR 1234567890

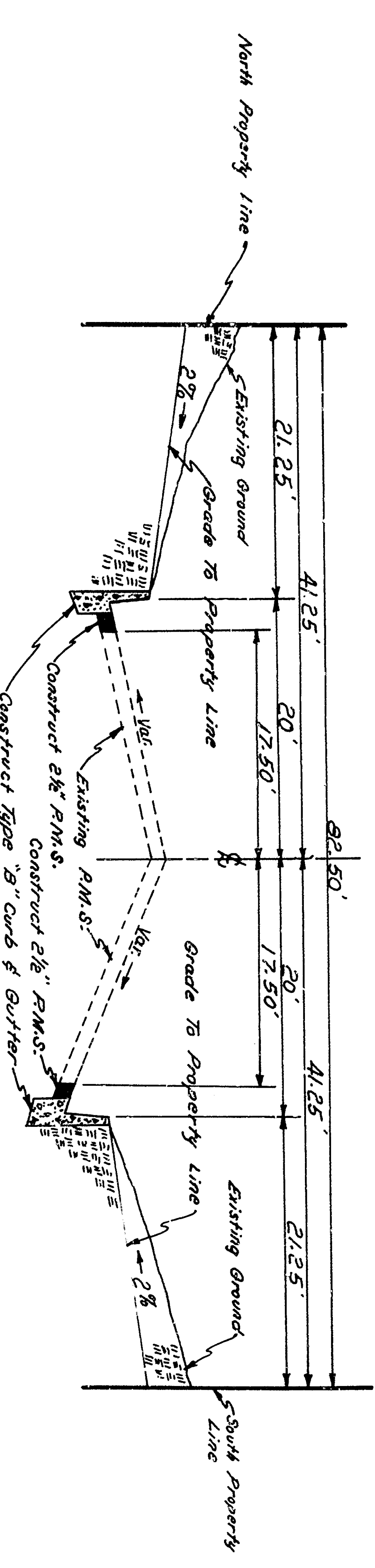


APPROVED	JULY 22, 1923	DEPARTMENT OF ENGINEERING
DRAWN BY	W. H. H. H.	CITY OF SAN BERNARDINO
CHECKED BY	DEAN	CURB, GUTTER & PAVING
RECOMMENDED		MARSHALL BOULEVARD
		VALENCIA AVENUE TO APPROXIMATELY 560+00
DRAWING NO. 2800		
SHEET 3 OF 9		

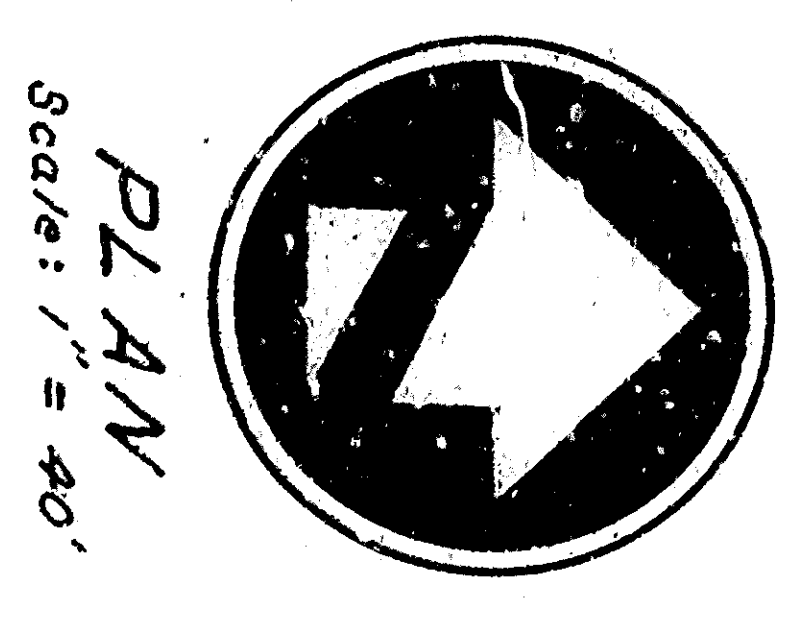
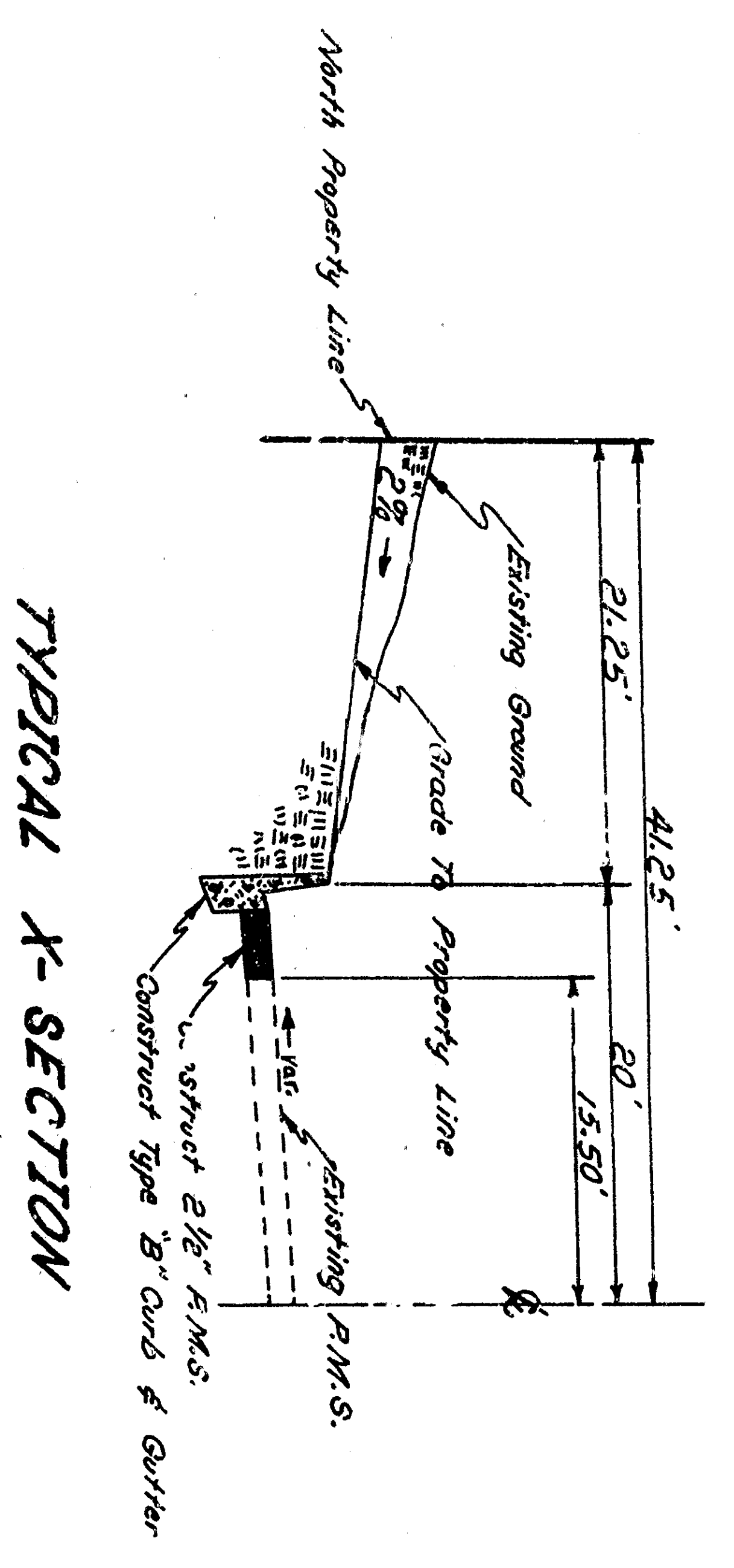


BEINGY ALARDO
 Senior Northeast Region of
 Valencia Avenue and Marshall
 Boulevard, EIR 1254-00 (12/14)

TYPICAL X-SECTION
 Scale: 1/4" = 1' - 0"



TYPICAL X-SECTION
 Scale: 1/4" = 1' - 0"



APPROVED	JULY 22, 1923	DEPARTMENT OF ENGINEERING
DRAWN BY	W. J. G. G.	CITY OF SAN BERNARDINO
CHECKED BY	DEAN	CURB, GUTTER & PAVING
RECOMMENDED		MARSHALL BOULEVARD
		VALENCIA AVENUE TO APPROXIMATELY 560+00
DRAWING NO. 2800		
SHEET 3 OF 9		

1254-00 (12/14)

1254-00 (12/14)